

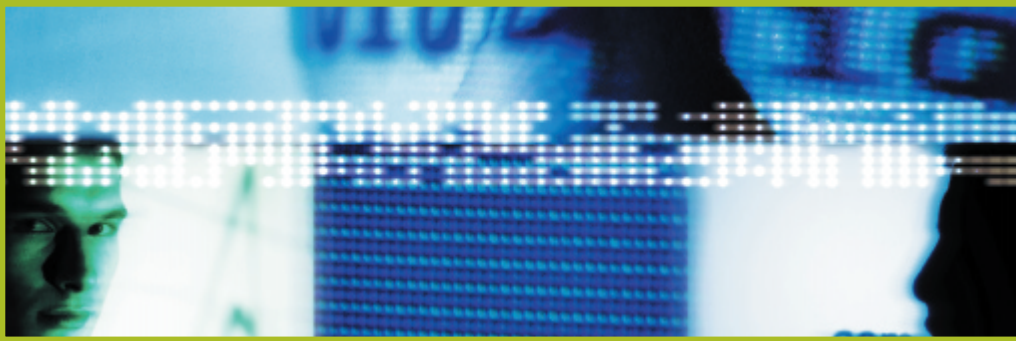
We Simplify Networks.SM

Spectra SystemTM



INTERCONNECT MANAGEMENT | QUALITY OF SERVICE | CUSTOMER CARE | SPECIAL STUDIES | NETWORK SECURITY | DIAGNOSTICS | WE SIMPLIFY NETWORKS.SM





Diagnostics

Inet Technologies provides diagnostic solutions for the continuing development and optimization of signaling and voice networks on a global scale. Inet's diagnostic tools accelerate network development, verify network capacity, establish network benchmarks, and improve time-to-market schedules. Optimize your network's reliability and stability, improve quality of service, maximize efficiency, and rigorously test interconnectivity issues. Expand your network into any world market; globalize development, realize new revenue opportunities, and increase market share.

Since Inet's inception in 1989, diagnostic products have been at the very core of the company. Today, Inet continues to push the envelope, providing diagnostic tools for such diverse applications as ISDN Trunk circuit verifications and TALI transactions. Whether your needs are based on today's networks or the networks of tomorrow, Inet has the answer.

The Spectra System

Look into your signaling and voice networks with a discerning eye. Collect statistics, capture signal units, or monitor transactions over an ATM backbone or a wireless connection. Filter messages on monitored linksets based on any combination of message parameters. Emulate a node or an entire network instantly. Prepare itemized reports on statistics gathered from an ISUP traffic model or an ISDN test script. Troubleshoot and analyze data even while testing, emulating, or generating traffic simultaneously across variant protocols.

No matter what protocols power your network, the Spectra system provides up to sixteen available signaling links for testing and call generation. With domestic and international protocol support, the Spectra system readies you for deployment in the global market.

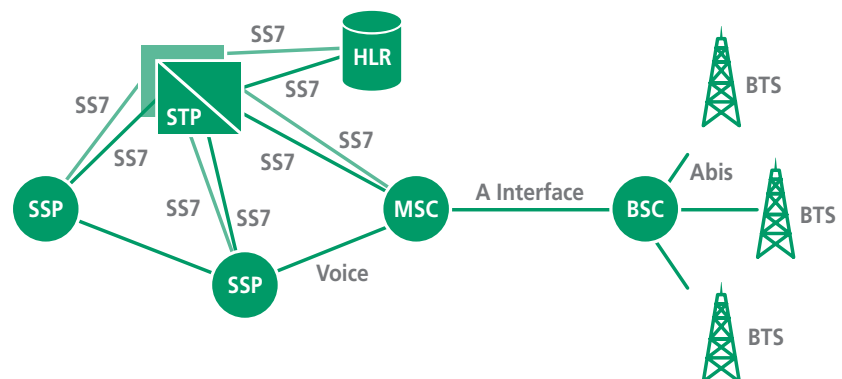
Accelerate Network Development

With MTP and Application Testing from a single box, the Spectra system enables you to accelerate your

network development. Conformance, Validation, and Regression Test Suites ensure network compliance with national and international signaling standards. The flexible scripting language, which allows selection from predefined test cases or custom built testing scenarios, enables test cases to be written quickly. Spectra's API and reporting tools allow test case automation and interfacing with a test case manager.

Verify Network Capacity

With the power to load the signaling network under extreme conditions, the Spectra system provides the toll to measure your networks' optimum performance. The Spectra's call generators relentlessly pound the system under test while keeping statistics on the number of BHCA and successful calls. In networks that have implemented high-speed signaling links, Spectra provides generation and application testing for SS7 over ATM and SS7 over unchannelized HDLC. Stress critical wireless revenue-generating roaming applications in GSM or IS41 networks. Generate up to 1.8 million BHCA and load up to 1,000 calls per second.



The Spectra System



Test More of Your Network

Perform end to end call traces over SS7 and ISDN networks. Customize up to 10 originating call scenarios for use within a traffic model. Emulate a single node or an entire network from a single test box without additional hardware or interface connections. The Spectra system can emulate the role of up to 16 STPs and up to 16 virtual signaling points with complete Level 2 and Level 3 handling. Emulation of the SCCP and TCAP role of up to 16 SCPs is also supported.

Spectra System Features

- *Protocol Analysis and Monitoring*
- *Protocol Testing (including Conformance, Validation, and Regression)*
- *Bulk Call Generation*
- *Call Trace*
- *Node Emulation*
- *Terminal Emulation*
- *Network Emulation*
- *Roaming Verification*
- *Link Manipulation Tools*
- *Pre-capture Tools*
- *Post-capture Tools*

Spectra System Capacities

- *Up to 16 signaling links*
- *Up to 16 emulated signaling points*
- *Up to 1.8 million BHCA*
- *Up to 1000 calls per second*

Media and Signaling Interfaces

- *DS1/E1 V5 Bantam*
- *DS1/E1 V6 BNC*

- *HSL DS1/E1*
- *BRI S/T V2*
- *J1*
- *DS0*
- *TALI*
- *V.35*
- *RS449*
- *RS232*

Protocols

- *SS7*
- *SS7 over ATM*
- *Unchannelized SS7 (HDLC)*
- *ISDN*
- *X.25*
- *GSM*
- *TCAP*
- *TALI*

Statistics and Test Results

- *Pre-and Post-Capture Analysis*
- *Complete Level 1 and Level 2 Performance Statistics*
- *Comprehensive Call-Based Performance Statistics*
- *Complete User Part Transaction Statistics*
- *ISUP/TUP Generator Results*
- *ISDN Generator Results*
- *TCAP Generator Results*
- *GSM Generator Results*

Other Features

- *Remote Access*
- *Intuitive User Interface*
- *High Density Interface Support*
- *Message Editor*

- *Audio Controller*
- *Tone Generator*
- *Programmer's Mode*
- *Protocol Decode Definition Module*

Spectra System Unit Specifications

Choose from one of the Spectra Trunk Tester units to meet your specific network diagnostic needs.



Portable

The portable Spectra unit is shipped with a built-in monitor and keyboard. Portable units are available in two link or four link options.



Rackmount

The rackmount unit is shipped with a separate VGA color monitor and keyboard. Rackmount units are available in 2-, 4-, 8-, 12-, and 16-link options.

Inet Technologies

1500 North Greenville Ave.
Richardson, Texas USA 75081
Telephone: 469.330.4000
Fax: 469.330.4001
info@inet.com

Inet Global, Ltd.

268 Bath Road
Slough Berkshire
United Kingdom • SL1 4DX
Telephone: +44.1753.70.8800
Fax: +44.1753.708861

Inet Deutschland GmbH

ARCUS Business Centre
Am Kronberger Hang 5
D-65824 Schwalbach/TS
Germany
Telephone: +49.6196.9519.0
Fax: +49.6196.9519.199

Inet Technologies-France

1, rue de la Haye, BP 10910
95731 Roissy CDG Cedex
France
Telephone: +33-1-49-19-21-87
Fax: +33-1-49-19-22-50

www.inet.com



Preliminary document. Specifications subject to change. Spectra is a trademark of Inet Technologies, Inc. The Inet logo is a registered trademark of Inet Technologies, Inc. All other trademarks, service marks, registered trademarks, or registered service marks mentioned in this document are the property of their respective owners. Copyright © 2000 Inet Technologies, Inc. All rights reserved. Printed in the USA.

The products and specifications, configurations, and other technical information regarding the services described or referenced in this document are subject to change without notice. All statements, technical information and recommendations contained in this document are believed to be accurate and reliable but are presented "as is" without warranty of any kind, express or implied. Users must take full responsibility for their application of any products specified in this document. Inet Technologies, Inc. makes no implied warranties of merchantability or fitness for a particular purpose as a result of this document or the information described or referenced within, and all other warranties, express or implied, are excluded.

2001/05

